

7th Edition  
March 4, 2026

# CVES New CTE Center Construction Update



# CTE Center Construction Project Update!

We're excited to share the seventh installment of our construction update series for the new CVES Career and Technical Education (CTE) Center in Plattsburgh. With 11 months of construction now complete and just four months remaining, the pace on site continues to be strong as we move steadily toward our targeted June 30 completion date.

Significant progress has been made within the High-Bay Lab spaces. All walls have now been painted, and the ceiling grid has been installed throughout these areas—an exciting visual milestone that truly brings the classrooms connected to the lab spaces to life. HVAC and electrical installations continue to advance, with crews working diligently to complete the complex mechanical and power systems. In addition, all windows, exterior doors, and garage doors have been installed in the High-Bay Lab spaces.

In the two-story portion of the building, metal framing for the classrooms and office spaces is now complete. Drywall installation is well underway and on track to be finished in early March, further defining the educational and administrative spaces within the facility. Window installation in this section of the building is also nearing completion. In our adjacent accessory building, which will house our environmental conservation program, sugar house, large animal barn, and our O&M garage, interior framing is complete. This building continues to take shape as trades finish in the primary structure and move to this building.

Despite a particularly harsh winter, progress has not slowed. We would like to extend a special thank you to the CVES Operations & Maintenance staff, who have taken on all snow removal responsibilities for the new building site. Their outstanding efforts have ensured safe access for workers and deliveries while also generating meaningful cost savings for the project. Their dedication has made a real difference during these challenging winter months.

The site remains highly active, with more than 100 workers on site each day, and several contractors working seven days a week to maintain momentum. While a significant amount of work remains—including continued mechanical, electrical, plumbing, finishes, and site improvements—we remain on schedule for completion as of June 30.

Each month brings visible transformation to the building, and the progress achieved reflects the dedication and collaboration of our project partners and the entire CVES team. We were grateful to provide a tour to our high school principals and component district superintendents to give them a better understanding of what they can expect from our programming in 2026-2027. We look forward to sharing continued advancements as we enter the final stretch of construction and move closer to opening this state-of-the-art facility for our students and community.

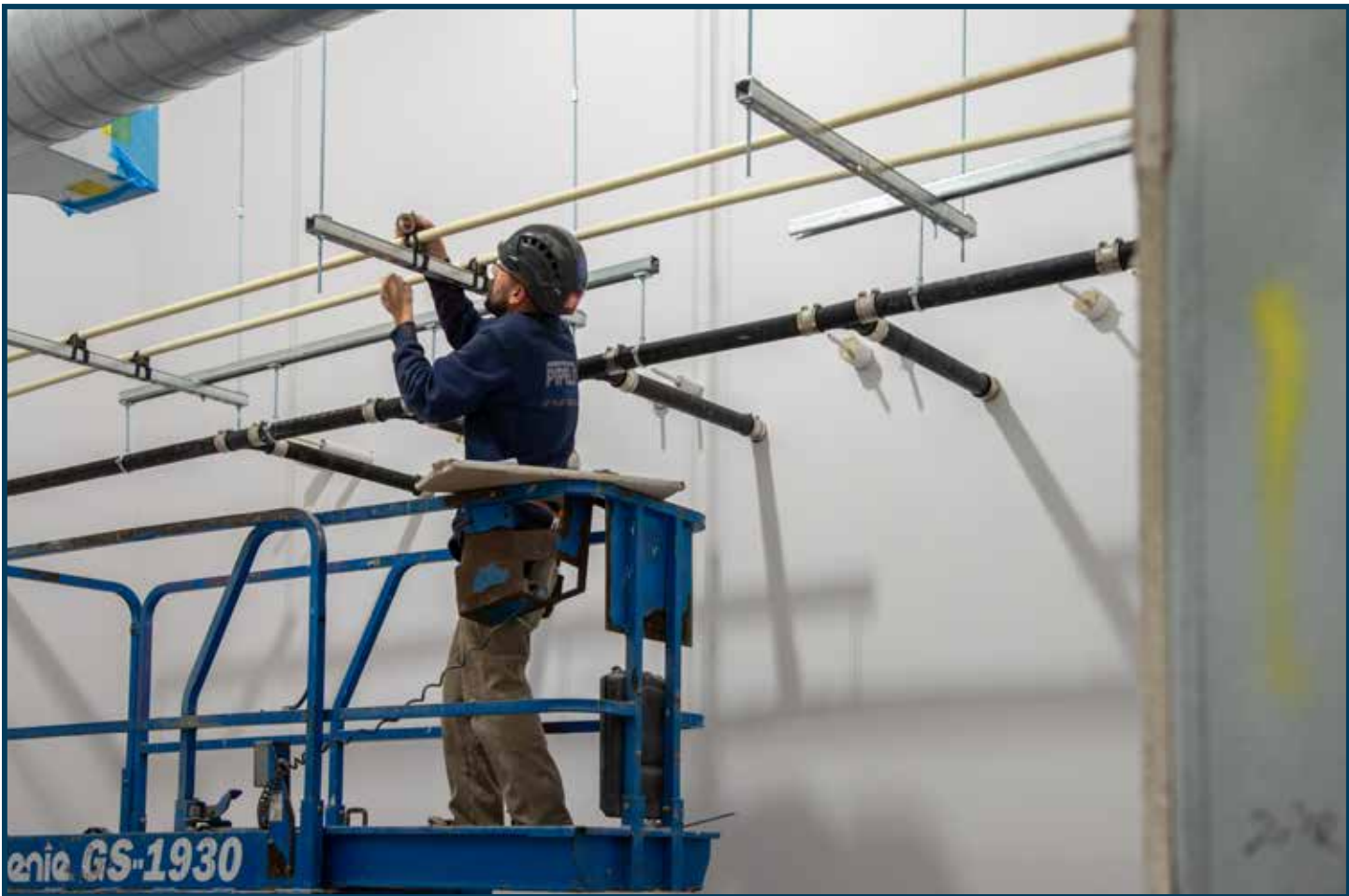












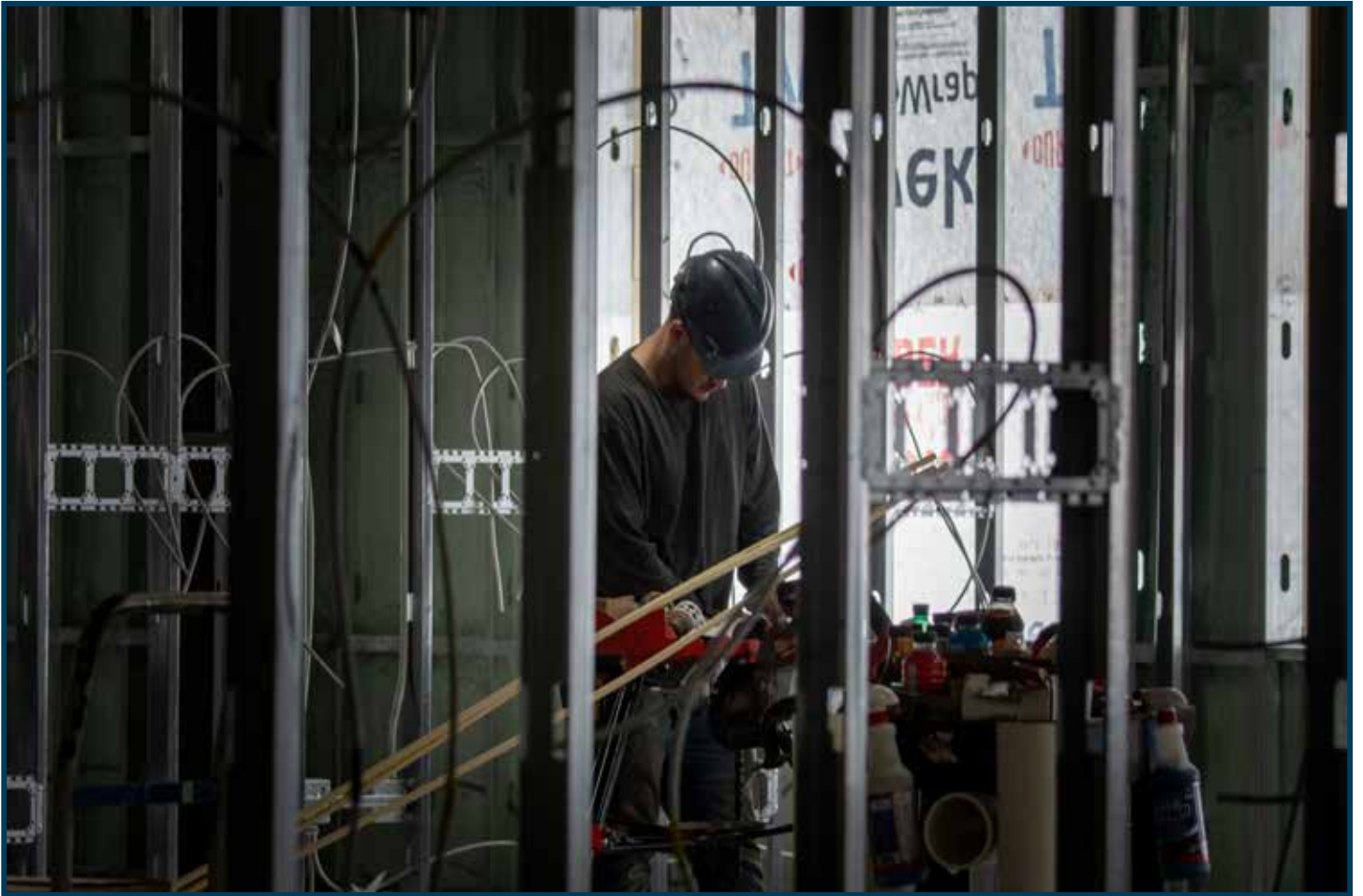






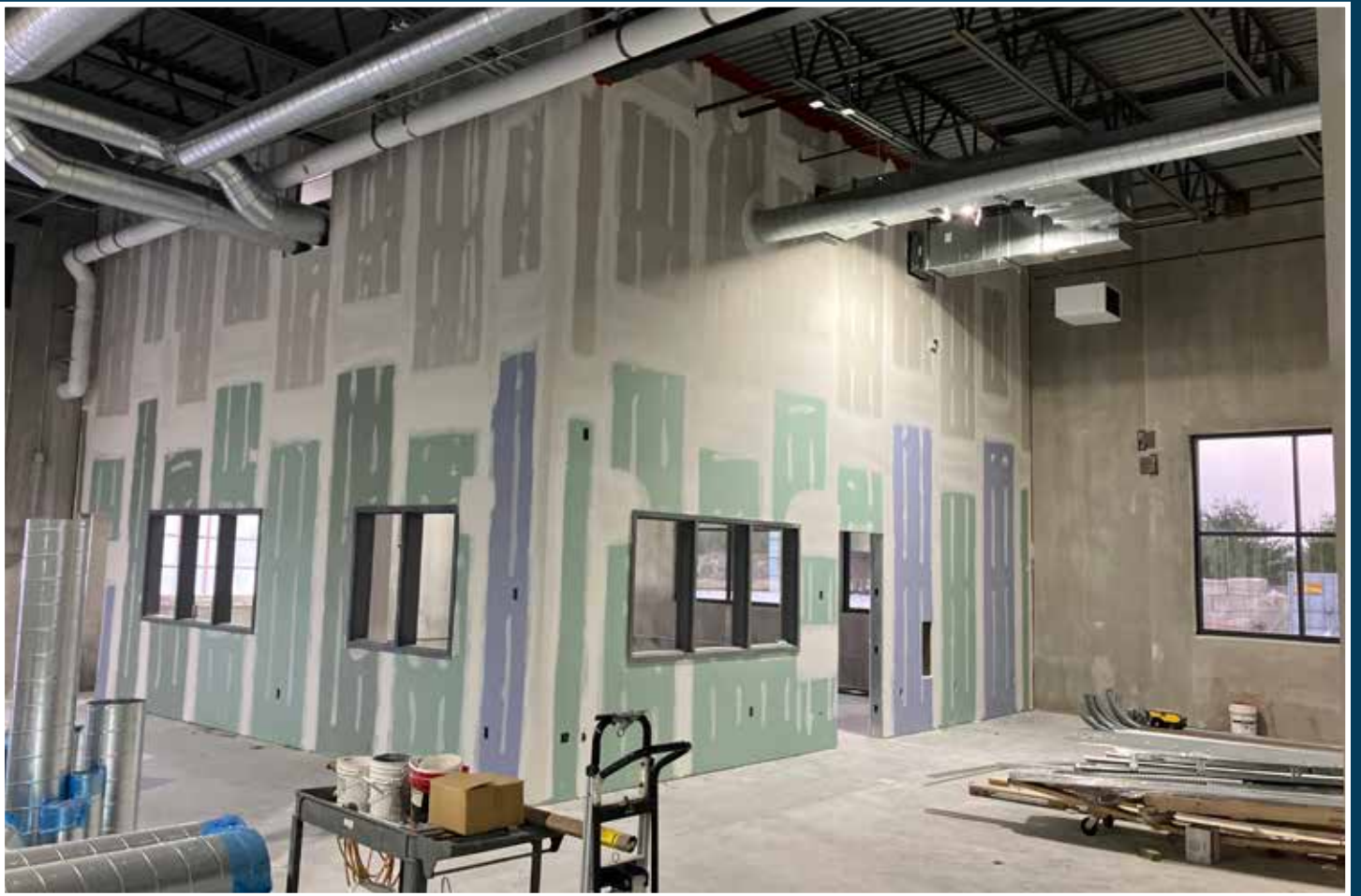
















# Accessory Building Progress Photos



