

# CVES Sale of Property Vote Informational Packet

## Vote Details:

Date: August 26, 2025

Time: 10:00am to 7:00pm

Locations:

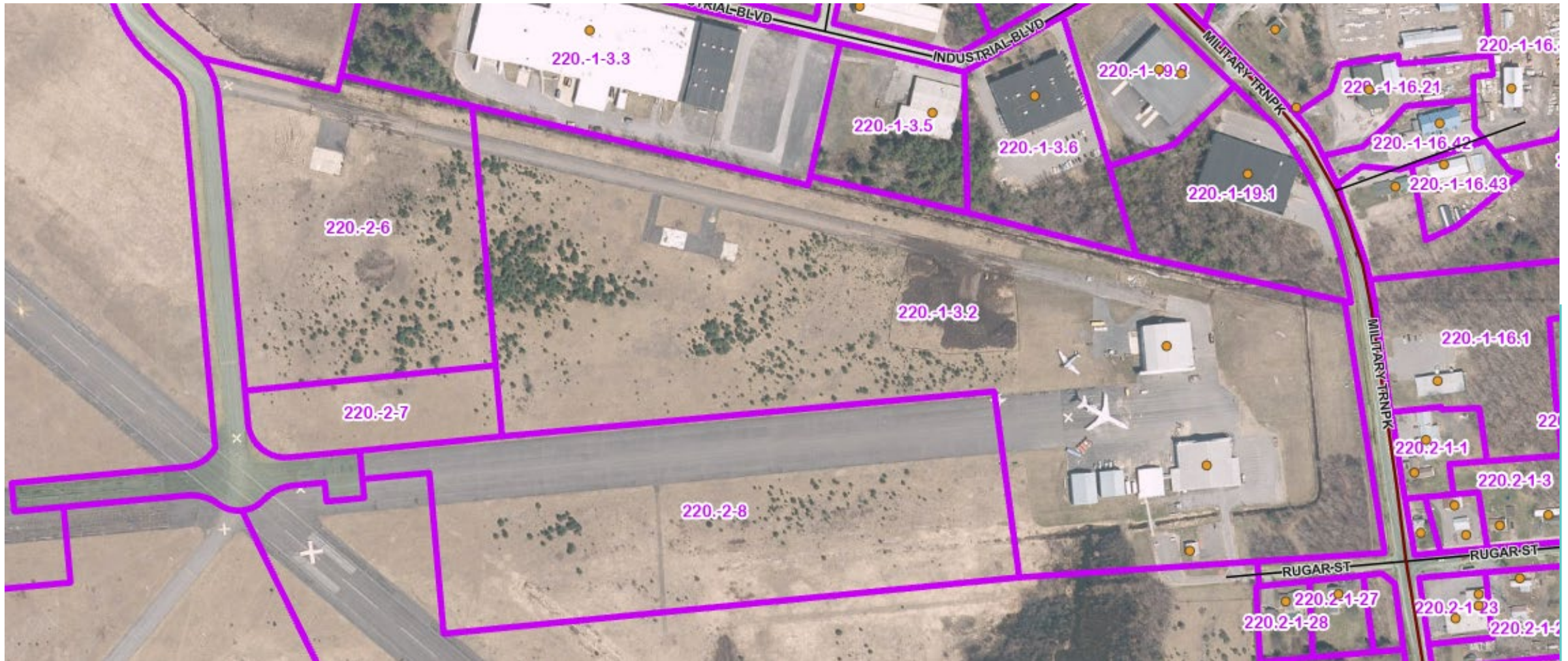
CVES Learning Hub 1443 Military Turnpike Plattsburgh

CVES Mineville Campus 3092 Plank Rd Mineville

Early voting is available! Apply via [cves.org/capital-project](https://cves.org/capital-project)



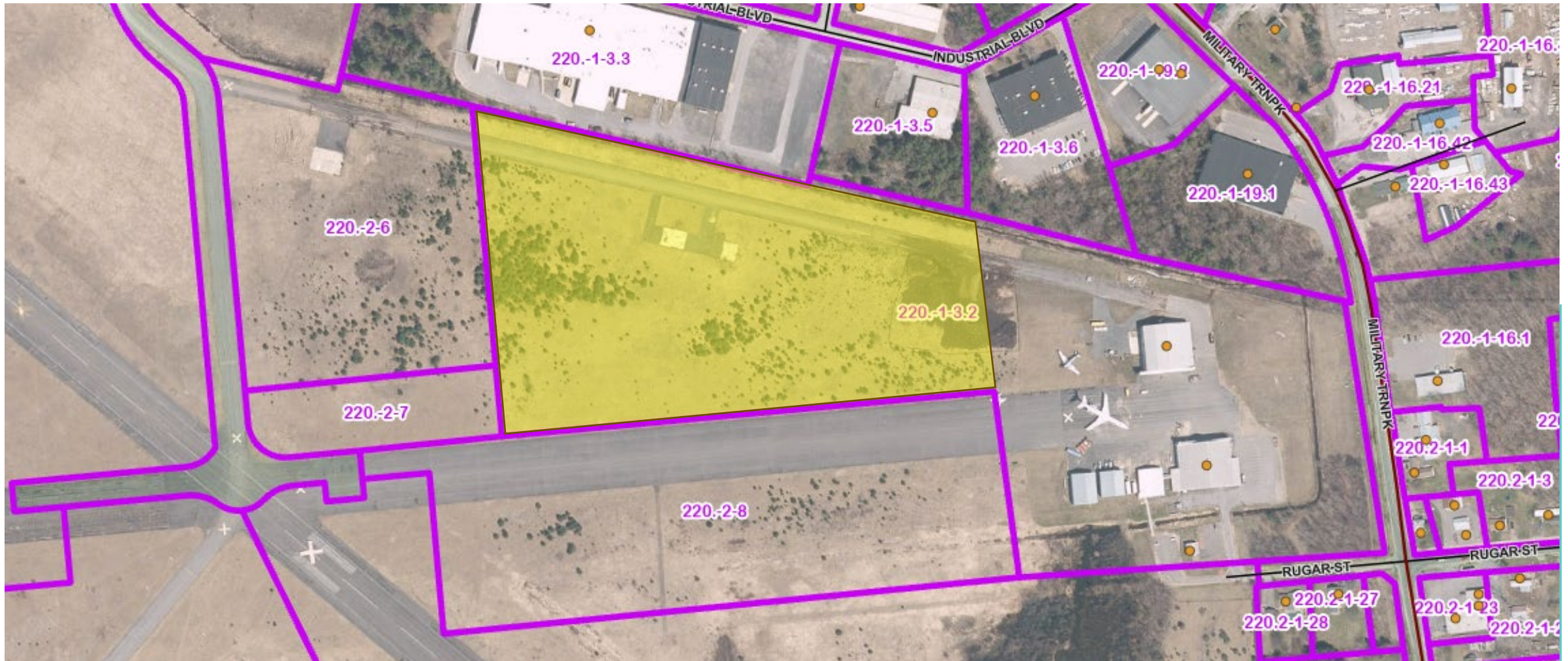
# Sale of Property: Location



CVES Owned Property: 220.-1-3.2

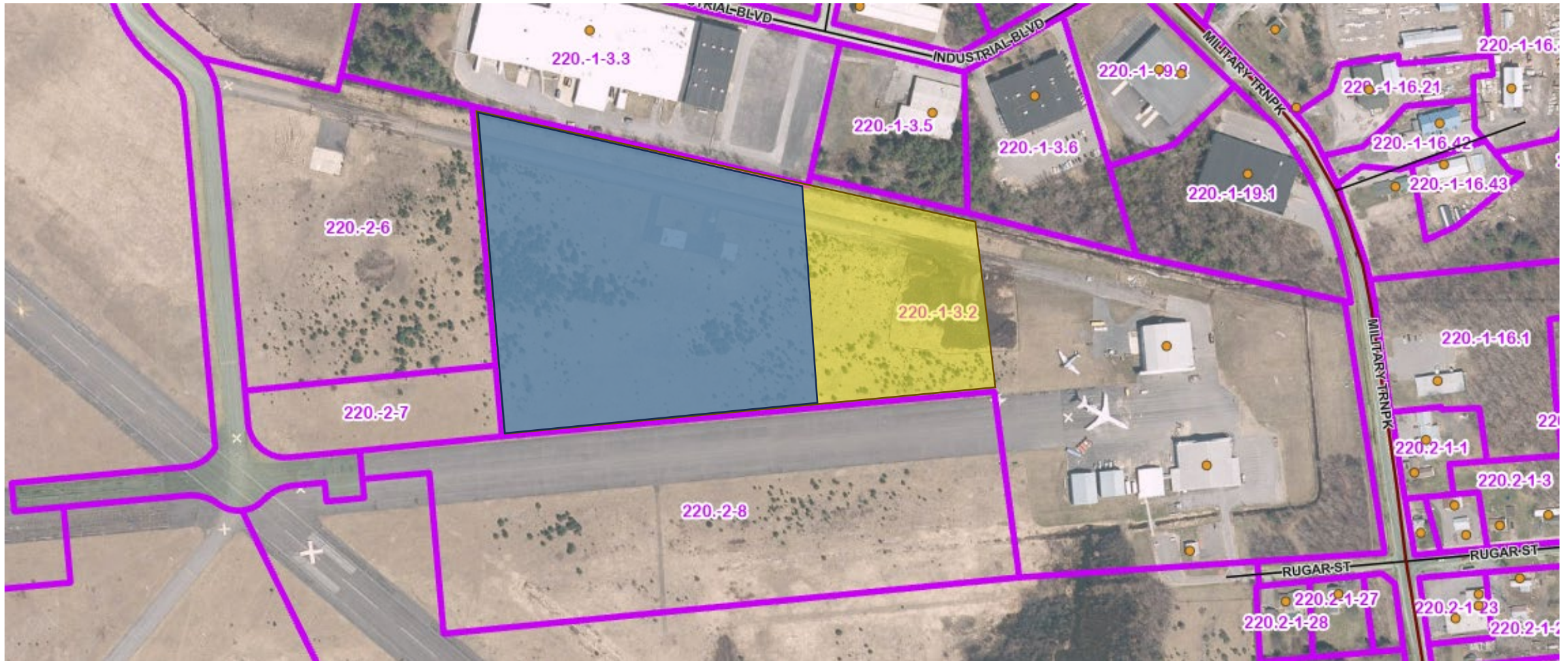
CIDC Owned Property for CVES New CTE Center: 220.-2-8

# Sale of Property: Location



Yellow: CVES Purchased 20 Acres for \$8,000 per acre (\$160,000) in June 2020

# Sale of Property: Location



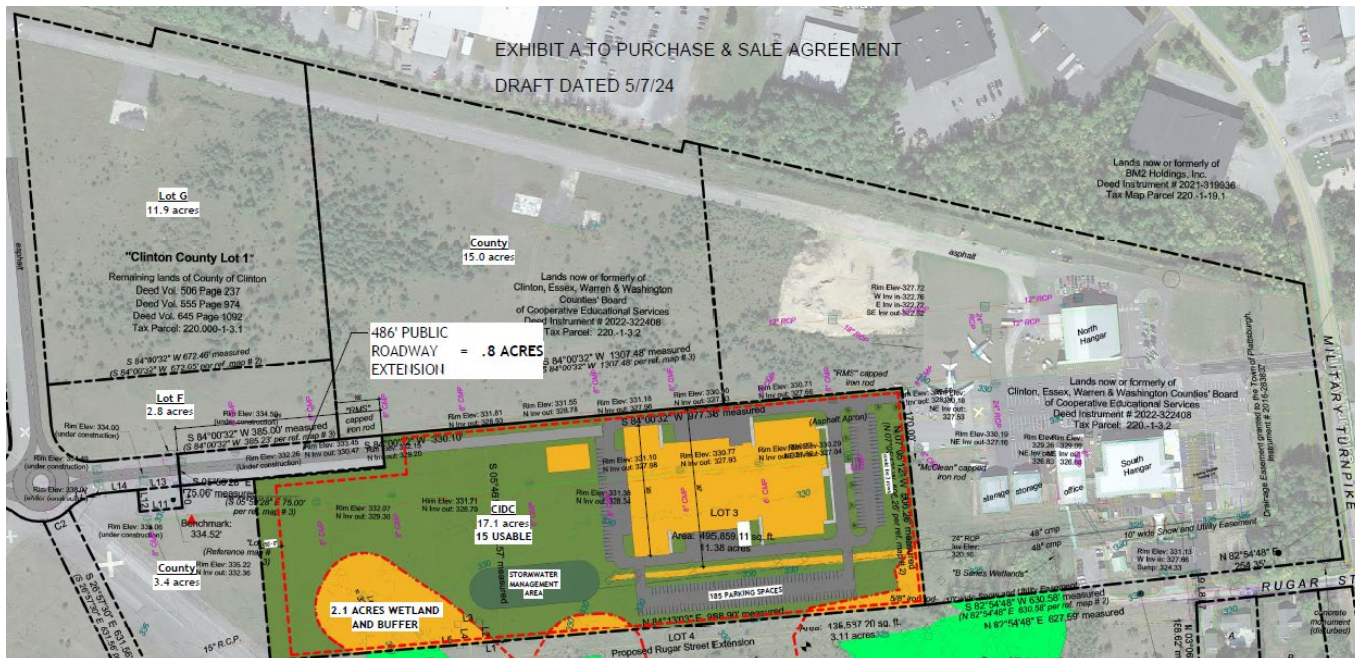
Blue: Proposed sale of 15 acres to Clinton County at \$28,000 per acres via public vote.

Yellow: Remaining property from the 20-acre purchase stays with CVES

# Sale of Property: Sale Details

## Details of the property sale:

- Board resolution authorizing the sale of land pending public vote
- Intended Purchaser: Clinton County
- Price: Fair market value (\$28,000 per acre) totaling \$420,000
- Proceeds from sale of land paid to our component districts in 2025-2026 school year



# Sale of Property: Access to Site

Public access to the property is from the road to the West being created by CIDC



# CVES Vote for Sale of Property

Plan for public vote for sale of 15-acre public vote:

## **Locations (2):**

CVES Learning Hub Campus: 1443 Military Turnpike Plattsburgh

CVES Mineville Campus: 3092 Plank Road Mineville

**Date:** August 26, 2025 10:00 a.m. to 7:00 p.m.

- Paper ballots at vote sites
- Early voting ballots available prior to the vote
  - Apply for early voting ballot at [cves.org/capital-project](https://cves.org/capital-project)
- Absentee ballots



# Eligible Voters

To be eligible to vote in this process (in person or early voting) you must be:

- A citizen of the United States;
- At least 18 years of age; and
- A resident of one of our component districts for a period of at least 30 days preceding the meeting or election at which you seek to vote.
  - CVES Component School Districts listed below for reference:

## CVES COMPONENT DISTRICTS

AuSable Valley  
Beekmantown  
Boquet Valley  
Chazy

Crown Point  
Keene  
Moriah  
Northeastern Clinton

Northern Adirondack  
Peru  
Plattsburgh  
Putnam

Saranac  
Schroon Lake  
Ticonderoga  
Willsboro

# Early Voting

- For an early voting ballot you must apply at [www.cves.org/capital-project](http://www.cves.org/capital-project) or in person with CVES District Clerk Katelyn Smart (1443 Military Turnpike Plattsburgh, NY)
  - [Smart\\_Katelyn@cves.org](mailto:Smart_Katelyn@cves.org)
- Early voting ballots can be delivered via mail to the voter or picked up in person at the address above.
- If you request that the early voting ballot be mailed to you, your application must be received by the CVES District Clerk no later than 7 days before the election
- You may personally deliver your application to the District Clerk no later than the day before the election.
- When your Early Voting ballot will be sent to you:
  - If you request that the early voting ballot be mailed to you, the District Clerk will mail your ballot by regular mail no later than 6 days prior to the election. Otherwise, the District Clerk will deliver your ballot to you or your agent, as designated on your application, when you or your agent appears in the District Clerk's office.
  - For your ballot to be canvassed, it must be received by the BOCES District Clerk by 4 p.m. on the day of the election.

# Questions?

If you have any questions, please reach out to Katelyn Smart, CVES District Clerk at 518-561-0100 or via email at [smart\\_katelyn@cves.org](mailto:smart_katelyn@cves.org)