

Clinton Essex Warren Washington Board of Cooperative  
Educational Services (CEWW BOCES)

## CV-TEC Division



## Annual Security Report

January 1, 2019 – December 31, 2019

Mineville Branch Campus



[www.cves.org/cv-tec](http://www.cves.org/cv-tec)

(518) 561-0100

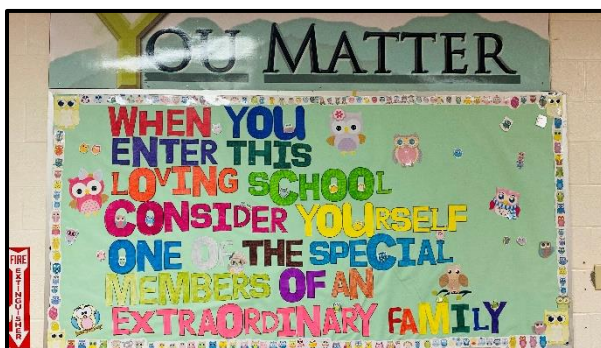
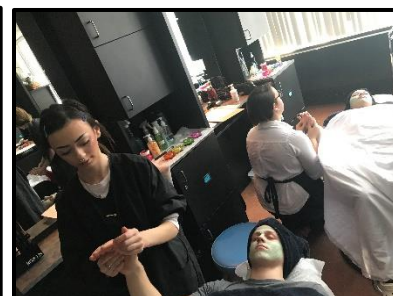


**Public Non-Discrimination Notice:**

Champlain Valley Educational Services does not discriminate on the basis of race, color, national origin, sex, disability, age or any other legally protected status in its programs, activities, employment and admissions; and provides equal access to the Boy Scouts and other designated youth groups. Inquiries regarding this nondiscrimination policy may be directed to one of the following Civil Rights Compliance Officers:

Mr. James McCartney III  
 518 Rugar Street  
 Plattsburgh, NY 12901  
 (518) 561-0100 x 243

Dr. Grace Stay  
 CVES– Mineville Campus  
 3092 Plank Road Box B  
 Mineville, NY 12956  
 (518) 561-0100 x 151



**Table of Contents**

Cover Page ..... 1

Public Non-Discrimination Notice ..... 2

Safety Personnel at CVES ..... 3-4

Our Mission, Vision, and Core Beliefs..... 5

Welcome to CV-TEC ..... 6

The Clery Act ..... 6 - 7

Our Safety and Security-Related Policies and Procedures ..... 7

Security Awareness and Crime Prevention ..... 8

Appendix..... 9

Report ..... 10

Version 1.0  
 11/18/20

## Safety Personnel

### CVES/CV-TEC Administrative Contacts:

<b>Contact</b>	<b>Title</b>	<b>Contact Information</b>
Bell, Eric	Assistant Superintendent/Public Information Officer	<a href="mailto:bell_eric@cves.org">bell_eric@cves.org</a> (518) 561-0100 x 230
Davey, Mark	District Superintendent/Public Information Officer	<a href="mailto:davey_mark@cves.org">davey_mark@cves.org</a> (518) 561-0100 x 211
Gray, Teri	Assistant Superintendent/Public Information Officer	<a href="mailto:gray_teri@cves.org">gray_teri@cves.org</a> (518) 561-0100 x 351
Facteau, Adam	Principal, CV-TEC Plattsburgh Main Campus	<a href="mailto:facteau_adam@cves.org">facteau_adam@cves.org</a> (518) 561-0100 x 237
Friedman, Michele	Director, CV-TEC Division	<a href="mailto:friedman_michele@cves.org">friedman_michele@cves.org</a> (518) 561-0100 x 235
McCartney, James	Principal, CV-TEC Plattsburgh Satellite Branch Campus	<a href="mailto:mccartney_james@cves.org">mccartney_james@cves.org</a> (518) 561-0100 x 243
Stay, Grace	Principal, CV-TEC Mineville Branch Campus	<a href="mailto:stay_grace@cves.org">stay_grace@cves.org</a> (518) 942-6691

### Safety Personnel:

Brooks, Jerry	Director, Operations & Maintenance	<a href="mailto:brooks_jerry@cves.org">brooks_jerry@cves.org</a> (518) 561-0100 x 228
Davey, Mark	District Superintendent/Public Information Officer	<a href="mailto:davey_mark@cves.org">davey_mark@cves.org</a> (518) 561-0100 x 211
Facteau, Adam	DASA Coordinator	<a href="mailto:facteau_adam@cves.org">facteau_adam@cves.org</a> (518) 561-0100 x 237
Friedman, Michele	Director, CV-TEC Division/Public Information Officer	<a href="mailto:friedman_michele@cves.org">friedman_michele@cves.org</a> (518) 561-0100 x 235
Gray, Teri	Assistant Superintendent/Public Information Officer	<a href="mailto:gray_teri@cves.org">gray_teri@cves.org</a> (518) 561-0100 x 351
McCartney, James	Civil Rights Compliance Officer/DASA Coordinator	<a href="mailto:mccartney_james@cves.org">mccartney_james@cves.org</a> (518) 561-0100 x 243
Mercier, Frank	Security and Law Instructor	<a href="mailto:mercier_frank@cves.org">mercier_frank@cves.org</a> (518) 561-0100 x 274
Sisson, Jeff	Health, Safety, Risk Management Specialist	<a href="mailto:sisson_jeff@cves.org">sisson_jeff@cves.org</a> (518) 561-0100 x 358
Stay, Grace	Civil Rights Compliance Officer	<a href="mailto:stay_grace@cves.org">stay_grace@cves.org</a> (518) 561-0100 x 151

**Intentionally Left Blank**



## Our Mission

*Champlain Valley Educational Services empowers students, schools and communities by providing exemplary education, training, support and shared services.*

## Our Vision

*We aspire to be a nationally recognized, premier provider of dynamic and innovative programs and services, serving as a catalyst for personal and regional economic growth.*

## Our Core Beliefs

- *Students are our first priority.*
- *We value open and honest communication.*
- *We embrace collaboration and shared decision-making.*
- *We promote creativity and innovation.*
- *All students can learn and be successful.*
- *We all lead by example.*
- *We act with integrity, fostering respect for all.*
- *Students, family and community are valued partners for success.*
- *We ensure a safe, supportive learning and work environment.*
- *We all impact the educational process and are dedicated to perform at the highest possible levels.*



CV-TEC Faculty, Staff, and Administration 2019

## Welcome to CV-TEC

The **Clinton, Essex, Warren, Washington Board of Cooperative Educational Services (CEWW BOCES)**, also legally known as **Champlain Valley Educational Services (CVES)**, serves 16 public school districts in four Northern New York Counties. It is comprised of three separate *divisions*: **CV-TEC** (the division providing Career and Technical Education instruction to secondary and adult students, and the division offering Title IV services),

**William A Fritz** (the division providing Special Education services to Northern New York secondary students), and the **Instructional Services Center (ISC)** (the division providing a range of services and professional development opportunities to North Country teachers). It should be noted that from its inception, **CV-TEC** has distinguished itself from other CVES services by its mission and its wide range of Career and Technical Education (CTE) programs. As a division, CV-TEC provides educational services on three separate campuses: the CV-TEC Main Campus, the CV-TEC Satellite Branch Campus, and the CV-TEC Mineville Branch Campus.

The CV-TEC division of Champlain Valley Educational Services (CVES) has had a long and distinguished history of serving the **Career and Technical Education (CTE)** needs of high school and adult students throughout our region. As a *public* education institution CV-TEC receives its mandate from the **NYS Legislature**, its oversight and direction from the **New York State Education Department (NYSED)** and **component district BOE representatives**, and many of its technical standards and practices through various **state and national professional associations and organizations**.

### CV-TEC Mineville Branch Campus

**CV-TEC's Mineville Branch Campus** is located at 3092 Plank Road, Box B, in Mineville, New York. The Mineville Branch Campus offers 6 programs open to adults, including: Allied Health; Automotive Tech; Construction Trades; Cosmetology; New Visions: Medical Careers; Natural Resource Management; and Security and Law Enforcement.

### The Clery Act

The **Jeanne Clery Disclosure of Campus Security Policy and Campus Crime Statistics (Clery Act)** is a federal law that requires colleges, universities and post-secondary educational institutions eligible to receive Title IV financial aid to disclose information about crime on and around their campuses.

CV-TEC is required annually to file a report with the United States Department of Education (USDOE) identifying crime-related data related to its three campus locations:

CV-TEC Plattsburgh Main Campus  
1585 Military Turnpike PO Box 455  
Plattsburgh, New York 12901

CV-TEC Plattsburgh Satellite Branch Campus  
518 Rugar Street  
Plattsburgh, New York 12901

CV-TEC Mineville Branch Campus  
PO Box B 3092 Plank Road  
Mineville, New York 12956.

CV-TEC's Annual Security Report is designed to provide the public with important information about the safety and security of our campus.

In addition to outlining the details of the programs CV-TEC offers community members, the report also contains statistics from the previous year concerning reported crimes that occurred on campus, on public property within- or immediately adjacent to- and accessible from, each of its campus locations.

You may obtain a copy of this report by contacting the CV-TEC Plattsburgh Satellite Branch Campus at 518-561-0100 x 243, or by visiting our website at: [www.cves.org](http://www.cves.org).

### **Our Safety and Security-Related Policies:**

CVES Board of Education is committed to the health, wellness and safety of all students on CVES' campuses. To this end, the Board approves policies and procedures that ensure these goals are met.

The following policies, by number and date of approval, have been passed by the CVES BOE to ensure the safety and welfare of all who attend or who visit our facilities:

<b>Policy Number</b>	<b>Policy Title</b>	<b>Approval Date</b>
<b>5010</b>	Anti-Discrimination Policy	9/9/20
<b>5300</b>	Code of Conduct	9/9/20
<b>5460</b>	Suspected Child Abuse and Maltreatment	9/10/14
<b>5465</b>	Dignity for All Students Act (Cyberbullying)	3/11/15
<b>5510</b>	Family Educational Rights and Privacy Act (FERPA)	8/20/14
<b>5512</b>	Parents Bill of Rights Relating to Student Data	6/10/20
<b>5520</b>	Protection of Pupil Rights	9/10/14
<b>8125</b>	CEWW BOCES Wellness Policy	6/13/18
<b>8129</b>	Concussion Awareness and Management Policy	3/11/15
<b>8140</b>	Automated External Defibrillation	11/21/02
<b>8147</b>	Blood-borne Pathogens	9/10/14
<b>8150</b>	The Pest Management Policy of CVES	3/11/15
<b>8160</b>	District-Wide School Safety Plan	9/9/20
<b>9007</b>	Notification of Breach of Security	3/11/15
<b>9010</b>	AUP for Technology Resources	7/13/16
<b>9012</b>	Discrimination Sexual Harassment Policy	11/14/18

## Security Awareness and Crime Prevention

In order to ensure the health, wellness and safety of all CVES students, of personnel, and of those who visit our campuses, CVES has created a non-confidential **District-Wide Safety Plan** that describes our Emergency Responses in general terms. This Safety Plan is reviewed annually and may be viewed by contacting our main CV-TEC office.

In addition to the District-Wide Plan, CVES has created specific **Building-Level Emergency Response Plans (Policies: # 8160.1 Building Level Emergency Response Plan for Special Ed & CV-TEC – Updated 9/26/19; # 8160.2 Building Level Emergency Response Plan for the Mineville Branch Campus – Updated 9/26/19; # 8160.3 Building Level Emergency Response Plan for Plattsburgh Satellite Campus – Updated 9/26/19)** for each campus serving secondary and post-secondary students. These Building-Level documents are *confidential* as they contain very specific information about our actions prior to, and during an emergency.

In the interest of student, personnel, and visitor safety, CVES has created OSHA/NYS Department of Labor-based **safety plans/bulletins** that relate to Occupational Safety and Health. As with the District-Wide Safety Plan, these plans are not confidential and are available to all employees through our internal server. These plans include:

- **Exposure Control Plan**
- **Confined Space Program**
- **Lock Out/Tag Out Management Plan**
- **PAD System Protocol**
- **Hazard Communication Program**
- **Respiratory Protection Program for Disposable Respirators**
- **Personal Protective Equipment Program**
- **Respiratory Protection Program**
- **COVID-19 Safety Bulletins**

It should be noted that CVES also receives undergoes **regular internal and external safety and security reviews**. These include, but are not limited to:

- An **annual safety and security report** from NYSIR, our insurance provider. These are reviewed and addressed promptly;
- A 5-year **Facilities Plan** that receives regular oversight and updating featuring all high-cost maintenance issues;
- An annual fire inspection performed in compliance with local and NYS Education Department and local building codes.
- An annual fire alarm system check;
- An annual maintenance check of all fire extinguishers from a third party professional organization;
- A **5-year NYSED-approved Building Condition Survey** undertaken by a BOE-approved architectural firm, Tetra-Tech. This survey gets reviewed thoroughly by the NYSED In addition, CVES is presently undergoing an extensive review of its campus facilities as part of a larger **Capital Improvement Project**;
- Monthly safety inspections are performed within each program as a Title IV-eligible institution.

## Conclusion:

During the 2019 calendar year, *January 1, 2019 through December 31, 2019*, the **CV-TEC Mineville Branch Campus** did not have any crime related incidents, as reported in its internal incident reporting system. Additionally, there were no crime related incidents, as reported by the Essex County Sheriff's Department and by CV-TEC's annual [Secondary] "**School Safety and the Educational Climate**" (SSEC) report.



**Appendix**  
**Clery Report Results**

# 2020 Campus Safety and Security Survey

Institution: Mineville Branch Campus (417868003)

User ID: C4178681

## Screening Questions

Please answer these questions carefully. The answers you provide will determine which screens you will be asked to complete for this data collection.

### 1. Does your institution provide On-campus Student Housing Facilities?

- No.**
- Yes.** (If Yes is selected, you must enter the number of student housing facilities below and enter Fire Statistics for each facility.)

Number of On-campus Student Housing Facilities:

---

### 2. Does your institution have any noncampus buildings or properties?

- Yes**
- No**

---

### 3. Have you combined statistics that you received from the local or state police with your institution statistics for this report? If you answer No to this question, you will be asked to provide the data you received from the local and state police separately.

- Yes.** Local and/or state law enforcement agencies provided us with statistics that we are combining with statistics collected by our campus security authorities.
- No.** We are not combining the statistics because we cannot determine whether the statistics we obtained from local and/or state law enforcement agencies are for on-campus incidents or public property incidents.
- Not available.** We cannot determine if the statistics we obtained from local and/or state law enforcement agencies are for our Clery geography.
- Not available.** We made a good-faith effort to obtain statistics from local and/or state law enforcement agencies, but the agencies did not comply with our request.

# Criminal Offenses - On campus

For each of the following criminal offenses, enter the number reported to have occurred On Campus.

Criminal offense	Total occurrences On campus		
	2017	2018	2019
a. <u>Murder/Non-negligent manslaughter</u>	<input type="text" value="0"/>	<input type="text" value="0"/>	<input type="text" value="0"/>
b. <u>Manslaughter by Negligence</u>	<input type="text" value="0"/>	<input type="text" value="0"/>	<input type="text" value="0"/>
c. <u>Rape</u>	<input type="text" value="0"/>	<input type="text" value="0"/>	<input type="text" value="0"/>
d. <u>Fondling</u>	<input type="text" value="0"/>	<input type="text" value="0"/>	<input type="text" value="0"/>
e. <u>Incest</u>	<input type="text" value="0"/>	<input type="text" value="0"/>	<input type="text" value="0"/>
f. <u>Statutory rape</u>	<input type="text" value="0"/>	<input type="text" value="0"/>	<input type="text" value="0"/>
g. <u>Robbery</u>	<input type="text" value="0"/>	<input type="text" value="0"/>	<input type="text" value="0"/>
h. <u>Aggravated assault</u>	<input type="text" value="0"/>	<input type="text" value="0"/>	<input type="text" value="0"/>
i. <u>Burglary</u>	<input type="text" value="0"/>	<input type="text" value="0"/>	<input type="text" value="0"/>
j. <u>Motor vehicle theft</u> (Do not include theft from a motor vehicle)	<input type="text" value="0"/>	<input type="text" value="0"/>	<input type="text" value="0"/>
k. <u>Arson</u>	<input type="text" value="0"/>	<input type="text" value="0"/>	<input type="text" value="0"/>

**Caveat:**

If you have changed prior years' data, you must add a caveat explaining the change. Use the following format: "For (YEAR), Line (X) was changed from (A) to (B) because (REASON)."



# Criminal Offenses - Public Property

For each of the following criminal offenses, enter the number reported to have occurred on Public Property.

Criminal offense	Total occurrences on Public Property		
	2017	2018	2019
a. <u>Murder/Non-negligent manslaughter</u>	<input type="text" value="0"/>	<input type="text" value="0"/>	<input type="text" value="0"/>
b. <u>Manslaughter by Negligence</u>	<input type="text" value="0"/>	<input type="text" value="0"/>	<input type="text" value="0"/>
c. <u>Rape</u>	<input type="text" value="0"/>	<input type="text" value="0"/>	<input type="text" value="0"/>
d. <u>Fondling</u>	<input type="text" value="0"/>	<input type="text" value="0"/>	<input type="text" value="0"/>
e. <u>Incest</u>	<input type="text" value="0"/>	<input type="text" value="0"/>	<input type="text" value="0"/>
f. <u>Statutory rape</u>	<input type="text" value="0"/>	<input type="text" value="0"/>	<input type="text" value="0"/>
g. <u>Robbery</u>	<input type="text" value="0"/>	<input type="text" value="0"/>	<input type="text" value="0"/>
h. <u>Aggravated assault</u>	<input type="text" value="0"/>	<input type="text" value="0"/>	<input type="text" value="0"/>
i. <u>Burglary</u>	<input type="text" value="0"/>	<input type="text" value="0"/>	<input type="text" value="0"/>
j. <u>Motor vehicle theft</u> (Do not include theft from a motor vehicle)	<input type="text" value="0"/>	<input type="text" value="0"/>	<input type="text" value="0"/>
k. <u>Arson</u>	<input type="text" value="0"/>	<input type="text" value="0"/>	<input type="text" value="0"/>

**Caveat:**

If you have changed prior years' data, you must add a caveat explaining the change. Use the following format: "For (YEAR), Line (X) was changed from (A) to (B) because (REASON)."















m. Larceny-theft

0	0	0	0	0	0	0	0	0
---	---	---	---	---	---	---	---	---

n. Intimidation

0	0	0	0	0	0	0	0	0
---	---	---	---	---	---	---	---	---

o. Destruction/damage/  
vandalism of property.

0	0	0	0	0	0	0	0	0
---	---	---	---	---	---	---	---	---

YEAR 2018

**Criminal offense**

**Total**

**Occurrences of Hate crimes (Category of Bias for crimes)**

**Race Religion Sexual orientation Gender Gender Identity Disability Ethnicity National Origin**

a. Murder/ Non-negligent  
manslaughter

0	0	0	0	0	0	0	0	0
---	---	---	---	---	---	---	---	---

c. Rape

0	0	0	0	0	0	0	0	0
---	---	---	---	---	---	---	---	---

d. Fondling

0	0	0	0	0	0	0	0	0
---	---	---	---	---	---	---	---	---

e. Incest

0	0	0	0	0	0	0	0	0
---	---	---	---	---	---	---	---	---

f. Statutory rape

0	0	0	0	0	0	0	0	0
---	---	---	---	---	---	---	---	---

g. Robbery.

0	0	0	0	0	0	0	0	0
---	---	---	---	---	---	---	---	---

h. Aggravated assault

0	0	0	0	0	0	0	0	0
---	---	---	---	---	---	---	---	---

i. Burglary.

0	0	0	0	0	0	0	0	0
---	---	---	---	---	---	---	---	---

j. Motor vehicle theft  
(Do not include theft from a motor vehicle)

0	0	0	0	0	0	0	0	0
---	---	---	---	---	---	---	---	---

k. <u>Arson</u>	<input type="text" value="0"/>	<input type="text" value="0"/>	<input type="text" value="0"/>	<input type="text" value="0"/>	<input type="text" value="0"/>	<input type="text" value="0"/>	<input type="text" value="0"/>	<input type="text" value="0"/>	<input type="text" value="0"/>
l. <u>Simple assault</u>	<input type="text" value="0"/>	<input type="text" value="0"/>	<input type="text" value="0"/>	<input type="text" value="0"/>	<input type="text" value="0"/>	<input type="text" value="0"/>	<input type="text" value="0"/>	<input type="text" value="0"/>	<input type="text" value="0"/>
m. <u>Larceny-theft</u>	<input type="text" value="0"/>	<input type="text" value="0"/>	<input type="text" value="0"/>	<input type="text" value="0"/>	<input type="text" value="0"/>	<input type="text" value="0"/>	<input type="text" value="0"/>	<input type="text" value="0"/>	<input type="text" value="0"/>
n. <u>Intimidation</u>	<input type="text" value="0"/>	<input type="text" value="0"/>	<input type="text" value="0"/>	<input type="text" value="0"/>	<input type="text" value="0"/>	<input type="text" value="0"/>	<input type="text" value="0"/>	<input type="text" value="0"/>	<input type="text" value="0"/>
o. <u>Destruction/damage/vandalism of property.</u>	<input type="text" value="0"/>	<input type="text" value="0"/>	<input type="text" value="0"/>	<input type="text" value="0"/>	<input type="text" value="0"/>	<input type="text" value="0"/>	<input type="text" value="0"/>	<input type="text" value="0"/>	<input type="text" value="0"/>

YEAR 2017

Criminal offense	Total	Occurrences of Hate crimes (Category of Bias for crimes)							
		Race	Religion	Sexual orientation	Gender	Gender Identity	Disability	Ethnicity	National Origin
a. <u>Murder/ Non-negligent manslaughter</u>	<input type="text" value="0"/>	<input type="text" value="0"/>	<input type="text" value="0"/>	<input type="text" value="0"/>	<input type="text" value="0"/>	<input type="text" value="0"/>	<input type="text" value="0"/>	<input type="text" value="0"/>	<input type="text" value="0"/>
c. <u>Rape</u>	<input type="text" value="0"/>	<input type="text" value="0"/>	<input type="text" value="0"/>	<input type="text" value="0"/>	<input type="text" value="0"/>	<input type="text" value="0"/>	<input type="text" value="0"/>	<input type="text" value="0"/>	<input type="text" value="0"/>
d. <u>Fondling</u>	<input type="text" value="0"/>	<input type="text" value="0"/>	<input type="text" value="0"/>	<input type="text" value="0"/>	<input type="text" value="0"/>	<input type="text" value="0"/>	<input type="text" value="0"/>	<input type="text" value="0"/>	<input type="text" value="0"/>
e. <u>Incest</u>	<input type="text" value="0"/>	<input type="text" value="0"/>	<input type="text" value="0"/>	<input type="text" value="0"/>	<input type="text" value="0"/>	<input type="text" value="0"/>	<input type="text" value="0"/>	<input type="text" value="0"/>	<input type="text" value="0"/>
f. <u>Statutory rape</u>	<input type="text" value="0"/>	<input type="text" value="0"/>	<input type="text" value="0"/>	<input type="text" value="0"/>	<input type="text" value="0"/>	<input type="text" value="0"/>	<input type="text" value="0"/>	<input type="text" value="0"/>	<input type="text" value="0"/>
g. <u>Robbery.</u>	<input type="text" value="0"/>	<input type="text" value="0"/>	<input type="text" value="0"/>	<input type="text" value="0"/>	<input type="text" value="0"/>	<input type="text" value="0"/>	<input type="text" value="0"/>	<input type="text" value="0"/>	<input type="text" value="0"/>
h. <u>Aggravated assault</u>	<input type="text" value="0"/>	<input type="text" value="0"/>	<input type="text" value="0"/>	<input type="text" value="0"/>	<input type="text" value="0"/>	<input type="text" value="0"/>	<input type="text" value="0"/>	<input type="text" value="0"/>	<input type="text" value="0"/>
i. <u>Burglary.</u>	<input type="text" value="0"/>	<input type="text" value="0"/>	<input type="text" value="0"/>	<input type="text" value="0"/>	<input type="text" value="0"/>	<input type="text" value="0"/>	<input type="text" value="0"/>	<input type="text" value="0"/>	<input type="text" value="0"/>

j. Motor vehicle theft

0	0	0	0	0	0	0	0	0
---	---	---	---	---	---	---	---	---

k. Arson

0	0	0	0	0	0	0	0	0
---	---	---	---	---	---	---	---	---

l. Simple assault

0	0	0	0	0	0	0	0	0
---	---	---	---	---	---	---	---	---

m. Larceny-theft

0	0	0	0	0	0	0	0	0
---	---	---	---	---	---	---	---	---

n. Intimidation

0	0	0	0	0	0	0	0	0
---	---	---	---	---	---	---	---	---

o. Destruction/damage/  
vandalism of property.

0	0	0	0	0	0	0	0	0
---	---	---	---	---	---	---	---	---

**Caveat:**

If you have changed prior years' data, you must add a caveat explaining the change. Use the following format: "For (YEAR), Line (X) was changed from (A) to (B) because (REASON)."

# VAWA Offenses - On Campus

For each of the following crimes, enter the number reported to have occurred On Campus.

Crime	Total occurrences On Campus		
	2017	2018	2019
a. <u>Domestic violence</u>	0	0	0
b. <u>Dating violence</u>	0	0	0
c. <u>Stalking</u>	0	0	0

**Caveat:**

If you have changed prior years' data, you must add a caveat explaining the change. Use the following format: "For (YEAR), Line (X) was changed from (A) to (B) because (REASON)."

## VAWA Offenses - Public Property

For each of the following crimes, enter the number reported to have occurred on Public Property.

Crime	Total occurrences on Public Property		
	2017	2018	2019
a. <u>Domestic violence</u>	<input type="text" value="0"/>	<input type="text" value="0"/>	<input type="text" value="0"/>
b. <u>Dating violence</u>	<input type="text" value="0"/>	<input type="text" value="0"/>	<input type="text" value="0"/>
c. <u>Stalking</u>	<input type="text" value="0"/>	<input type="text" value="0"/>	<input type="text" value="0"/>

**Caveat:**

If you have changed prior years' data, you must add a caveat explaining the change. Use the following format: "For (YEAR), Line (X) was changed from (A) to (B) because (REASON)."



# Arrests - On campus

Enter the number of Arrests for each of the following crimes that occurred On Campus.

Crime	Number of Arrests		
	2017	2018	2019
a. <u>Weapons: carrying, possessing, etc.</u>	<input type="text" value="0"/>	<input type="text" value="0"/>	<input type="text" value="0"/>
b. <u>Drug abuse violations</u>	<input type="text" value="0"/>	<input type="text" value="0"/>	<input type="text" value="0"/>
c. <u>Liquor law violations</u>	<input type="text" value="0"/>	<input type="text" value="0"/>	<input type="text" value="0"/>

**Please Note:** Do NOT include drunkenness or driving under the influence in liquor law violations.

### Caveat:

If you have changed prior years' data, you must add a caveat explaining the change. Use the following format: "For (YEAR), Line (X) was changed from (A) to (B) because (REASON)."

# Arrests - Public Property

Enter the number of Arrests for each of the following crimes that occurred on Public Property.

Crime	Number of Arrests		
	2017	2018	2019
a. <u>Weapons: carrying, possessing, etc.</u>	<input type="text" value="0"/>	<input type="text" value="0"/>	<input type="text" value="0"/>
b. <u>Drug abuse violations</u>	<input type="text" value="0"/>	<input type="text" value="0"/>	<input type="text" value="0"/>
c. <u>Liquor law violations</u>	<input type="text" value="0"/>	<input type="text" value="0"/>	<input type="text" value="0"/>

**Please Note:** Do NOT include drunkenness or driving under the influence in liquor law violations.

### Caveat:

If you have changed prior years' data, you must add a caveat explaining the change. Use the following format: "For (YEAR), Line (X) was changed from (A) to (B) because (REASON)."

# Disciplinary Actions - On Campus

Enter the number of persons referred for disciplinary action for crimes that occurred On Campus for each of the following categories.

**Do not include disciplinary actions that were strictly for school policy violations.**

**If the disciplinary action is the result of an arrest, please do not count it here; count the violation as 1 arrest.**

Crime	Number of persons referred for Disciplinary Action		
	2017	2018	2019
a. <u>Weapons: carrying, possessing, etc.</u>	<input type="text" value="0"/>	<input type="text" value="0"/>	<input type="text" value="0"/>
b. <u>Drug abuse violations</u>	<input type="text" value="0"/>	<input type="text" value="0"/>	<input type="text" value="0"/>
c. <u>Liquor law violations</u>	<input type="text" value="0"/>	<input type="text" value="0"/>	<input type="text" value="0"/>

**Please Note:** Do NOT include drunkenness or driving under the influence in liquor law violations.

**Caveat:**

If you have changed prior years' data, you must add a caveat explaining the change. Use the following format: "For (YEAR), Line (X) was changed from (A) to (B) because (REASON)."

## Disciplinary Actions - Public Property

Enter the number of persons referred for disciplinary action for crimes that occurred on Public Property for each of the following categories.

**Do not include disciplinary actions that were strictly for school policy violations.**

**If the disciplinary action is the result of an arrest, please do not count it here; count the violation as 1 arrest.**

Crime	Number of persons referred for Disciplinary Action		
	2017	2018	2019
a. <u>Weapons: carrying, possessing, etc.</u>	<input type="text" value="0"/>	<input type="text" value="0"/>	<input type="text" value="0"/>
b. <u>Drug abuse violations</u>	<input type="text" value="0"/>	<input type="text" value="0"/>	<input type="text" value="0"/>
c. <u>Liquor law violations</u>	<input type="text" value="0"/>	<input type="text" value="0"/>	<input type="text" value="0"/>

**Please Note:** Do NOT include drunkenness or driving under the influence in liquor law violations.

### Caveat:

If you have changed prior years' data, you must add a caveat explaining the change. Use the following format: "For (YEAR), Line (X) was changed from (A) to (B) because (REASON)."

# Unfounded Crimes

Of those crimes that occurred On Campus, in On-campus Student Housing Facilities, on or in Noncampus property or buildings, and on Public Property, enter the number of crimes that were unfounded.

The total number of unfounded crimes should include all criminal offenses, hate crimes, domestic violence, dating violence, or stalking incidents that have been unfounded. Arrests and disciplinary actions cannot be unfounded.

	Number		
	2017	2018	2019
a. <u>Total unfounded crimes</u>	0	0	0

**Please Note:** If a reported crime is investigated by law enforcement authorities and found to be false or baseless, the crime is "unfounded." Only sworn or commissioned law enforcement personnel may unfound a crime.

Count unfounded crimes in the year in which they were originally reported.

## Caveat:

If you have changed prior years' data, you must add a caveat explaining the change. Use the following format: "For (YEAR), Line (X) was changed from (A) to (B) because (REASON)."